



RatioMatic Burners

Model RM100

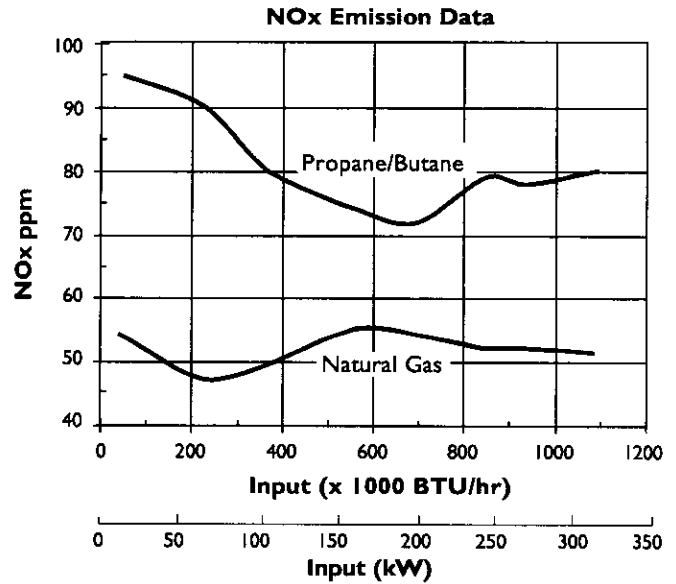
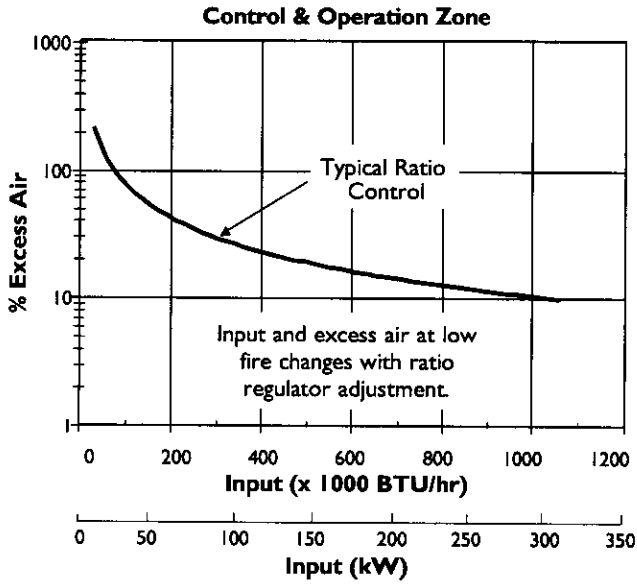
Version 3.10

Main Specifications - RM100

PARAMETER		SPECIFICATIONS			
		English		Metric	
		Capacity @ Chamber Pressure			
		BTU/hr @ "w.c.		kW @ mbar	
Maximum input	60 Hz packaged blower	1,340,000	-2.0	393	-5.0
		1,260,000	-1.0	370	-2.5
		1,170,000	0.0	343	0.0
		1,080,000	1.0	316	2.5
	50 Hz packaged blower	980,000	2.0	270	5.0
		1,360,000	-2.0	398	-5.0
		1,280,000	-1.0	375	-2.5
		1,200,000	0.0	351	0.0
Note: Contact factory for varying chamber pressures or pressures outside the range: -2.0 to 2.0" w.c. (-5,0 to 5,0 mbar)		1,110,000	1.0	325	2.5
		1,010,000	2.0	296	5.0
Minimum input	with high turndown ratio regulator	BTU/hr		kW	
	with standard ratio regulator	30,000		9	
		40,000		12	
Main gas inlet pressure • fuel pressure at ratio regulator inlet		10 to 20 "w.c.		25 to 50 mbar	
High fire flame length • measured from the outlet end of the combustor.	Natural Gas	32 in		813 mm	
	Propane/Butane	38 in		965 mm	
Maximum chamber temperature	Alloy tube SiC tube	°F		°C	
		1500		820	
		1900		1040	
Flame detection		Flame rod or UV scanner			
Fuel		Natural Gas, Propane or Butane. For any other mixed gas, contact Eclipse Combustion for orifice sizing			

- All information is based on laboratory testing. Different chamber size and conditions will affect the data.
- Maximum inputs are given for the standard combustion air blower without an air filter.
- All inputs based upon gross calorific values and standard conditions; 1 atmosphere, 70° F (21°C).
- Eclipse reserves the right to change the construction and/or configuration of our products at any time without being obliged to adjust earlier supplies accordingly.

Performance Graphs RatioMatic RM100



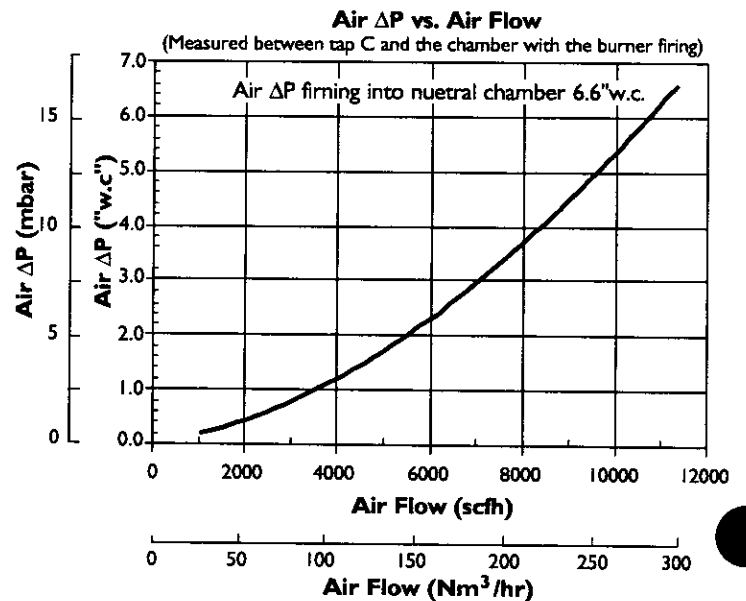
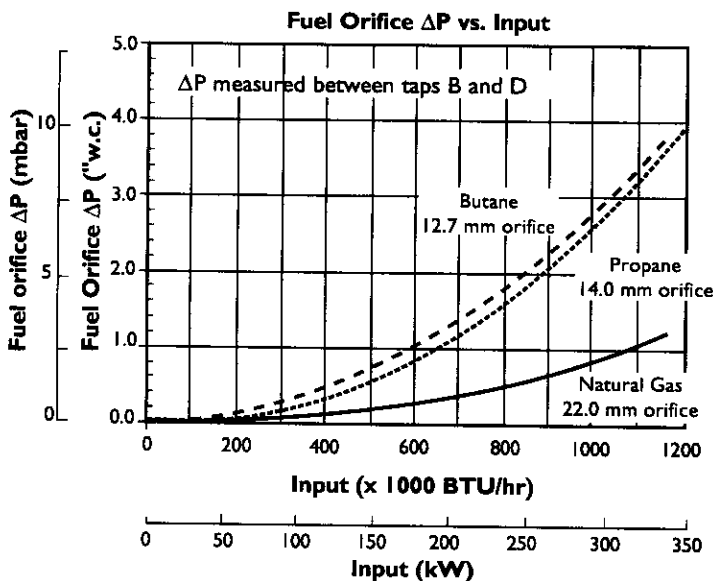
NOx emission data is given for:

- Ambient combustion air ~70 F (20 C)
- Less than 700 F (370 C) firing chamber
- Minimal process air velocity
- Low fire input adjusted to 30,000 BTU/hr (9kW)
- ppm volume dry at 3% O₂
- Neutral chamber pressure

Emissions are influenced by:

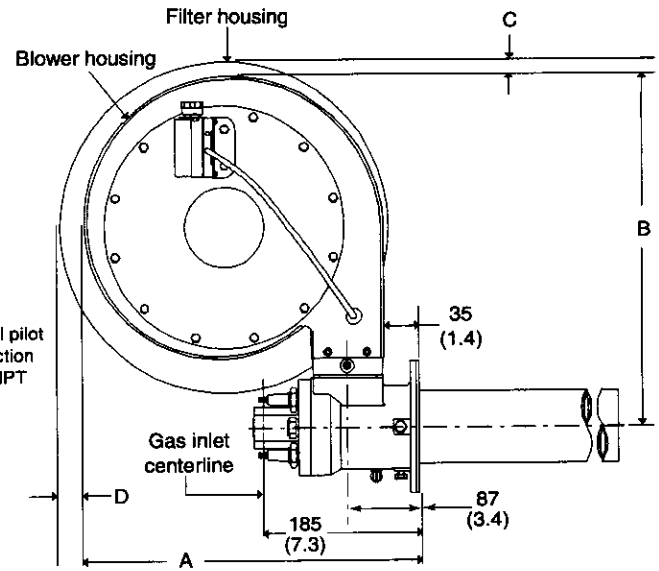
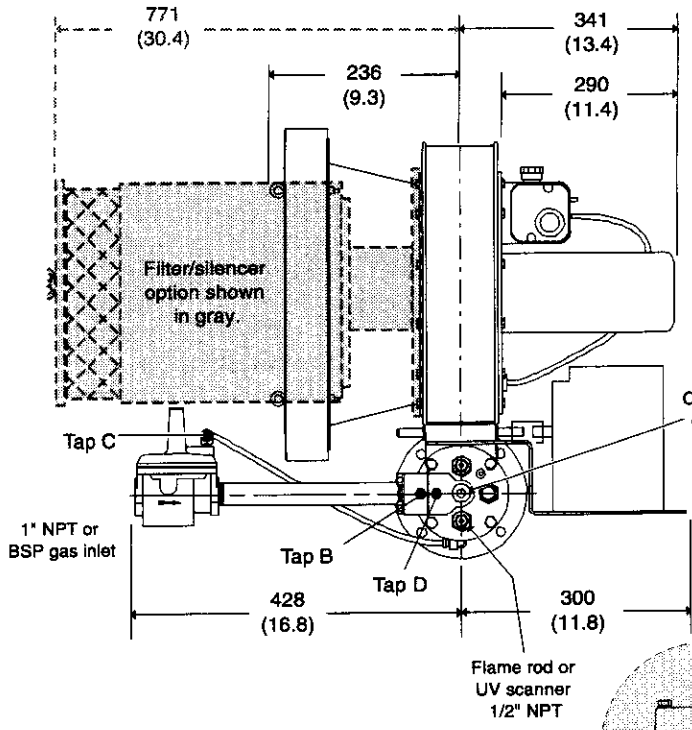
- Chamber conditions
- Fuel type
- Firing rate
- Ratio regulator adjustment
- Combustion air temperature

CO emission is largely influenced by chamber conditions. Contact your local Eclipse Combustion representative for an estimate of CO emission on your application.

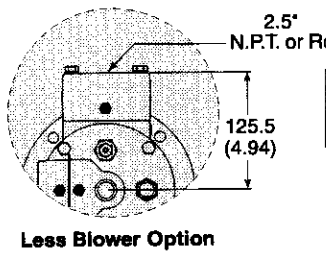


Dimensions-RM100

Dimensions in mm (in)



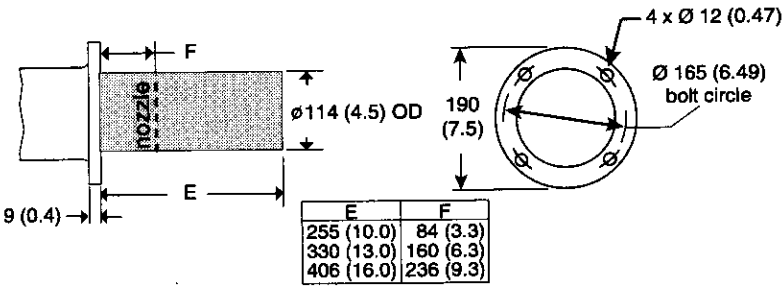
Weights		
	lb	kg
Packaged burner	75	35
Filter silencer	41	19



	A	B	C	D
50 Hz	485 (19.1)	530 (20.9)	n/a	n/a
60 Hz	425 (16.7)	475 (18.7)	10 (0.4)	23 (0.9)

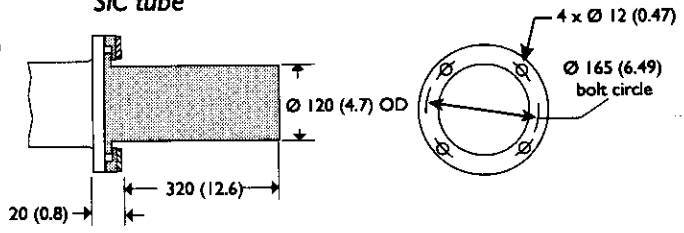
Combustor types

Alloy tube

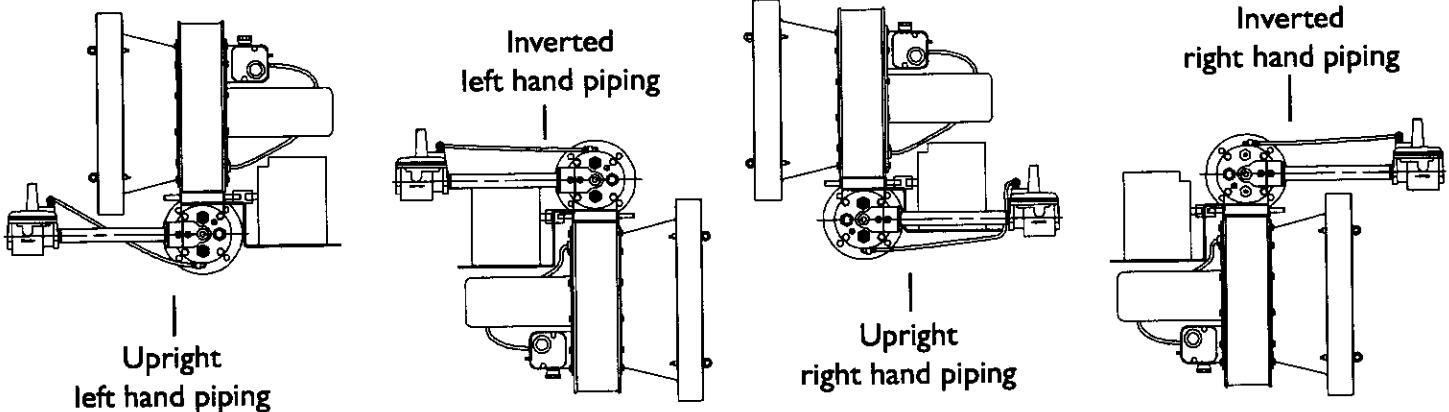


E	F
255 (10.0)	84 (3.3)
330 (13.0)	160 (6.3)
406 (16.0)	236 (9.3)

SiC tube



Burner configuration





Offered By:

Power Equipment Company
2011 Williamsburg Road
Richmond, Virginia 23231
Phone (804) 236-3800
Fax (804) 236-3882

www.peconet.com